

Anti-BTLA hlgG4 Antibody(Icatolimab)

产品信息

| | |
|-----------------|--------|
| GM-28675AB-10 | 10 µg |
| GM-28675AB-100 | 100 µg |
| GM-28675AB-1000 | 1 mg |

抗体信息

| | |
|--------------------|---|
| Species Reactivity | Human |
| Clone | Icatolimab |
| Source/Isotype | Monoclonal human IgG4, κ |
| Application | Flow cytometry |
| Specificity | Detects BTLA. |
| Gene | BTLA |
| Other Names | BTLA1, CD272 |
| Gene ID | 151888 |
| Background | B- and T-lymphocyte attenuator or BTLA (also known as cluster of differentiation 272 or CD272) is a protein that belongs to the CD28 immunoglobulin superfamily (IgSF) which is encoded by the BTLA gene located on the 3rd human chromosome. BTLA is a 289 amino acid long transmembrane glycoprotein. It consists of an extracellular domain, a transmembrane domain, and a cytoplasmic domain, similar in structure to PD-1 and CTLA-4. HVEM is the main ligand of BTLA which has inhibition and activation capacities. When a T cell is fully activated HVEM is internalized, and this allows BTLA to interact in a trans manner (with molecules on other cells). This enables other cells who express HVEM to regulate activated T cells. Treg cells express HVEM and can facilitate immune suppression through interaction with BTLA. Furthermore, the blockage of BTLA together with PD-1 can help reverting the state of exhaustion |
| Storage | Store at 2-8°C short term (1-2 weeks).Store at ≤ -20°C long term.Avoid repeated freeze-thaw. |
| Formulation | Phosphate-buffered solution, pH 7.2. |
| Endotoxin | < 1 EU/mg, determined by LAL gel clotting assay |

Version:3.1 Revision Date:12/25/2023

Data Examples

Flow cytometry

The recommended usage range is 0.5-4 μg per test. H_BTLA CHO-K1 Cell Line (Catalog # GM-C19148) was stained with Anti-BTLA hlgG4 Antibody(Catalog # GM-28675AB) or isotype control antibody, followed by anti-Human IgG APC-conjugated Secondary Antibody.

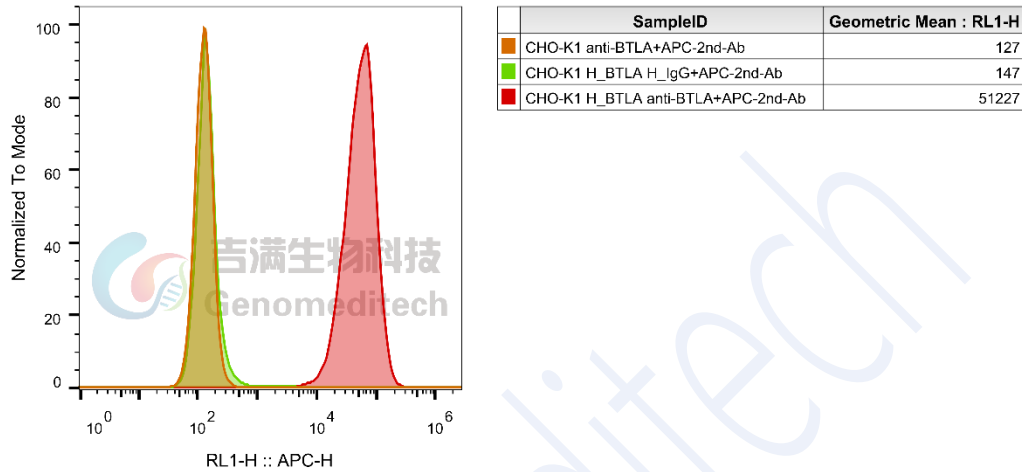


Fig. FACS